

# Integrated, Intelligent Transportation Systems (I2TS)

A Working Group of the Eastern Ontario Leadership  
Council

*2:30 pm September 11, 2019*  
*Breakout Session at Ontario East Municipal Conference*



Eastern Ontario's  
**Leadership  
Council** Economic  
Development

# *Overview of This Session:*

- What is the mandate of the I2TS Working Group?
- What are the long-term objectives?
- What is our near-term implementation plan?
- What are we working on 'right now'?
- Time for your feedback!
- Next steps
- Ways to get/stay involved



# *Mandate of the I2TS Working Group*

## **The Working Group was created to:**

- Serve as a catalyst and provide leadership in **implementation of transportation-related actions identified in the Strategy** or other actions to achieve the same ends
- Develop, **prioritize, advise and recommend** actions to the EOLC related to improvements to the region's transportation system (*working group reports regularly to the EOLC*)
- Work collaboratively to **identify partners and other resources** required to implement recommended actions, and provide leadership in preparation of business cases and/or funding/financing applications to support implementation
- Working Groups have **volunteer members and welcome observers** from provincial ministries



# Long-Term Transportation-Related Objectives of I2TS Working Group (EOLC)

## Two Aspirational Objectives

- Improve Eastern Ontario's access to major domestic and international markets
  - *Near-term action:* assess Eastern Ontario's position as a strategic hub for international and domestic transportation system.
- Ensure regional and local transportation infrastructure is responsive to the major technology trends
  - *Near-term action:* conduct research, development and in situ testing on smart transportation infrastructure and its applications across multiple government boundaries.
- *Long-term action:* undertake region-wide transportation initiatives that target the movement of both goods and people (technology integration, business cases for significant regional infrastructure investments, sustainable modes of transportation)

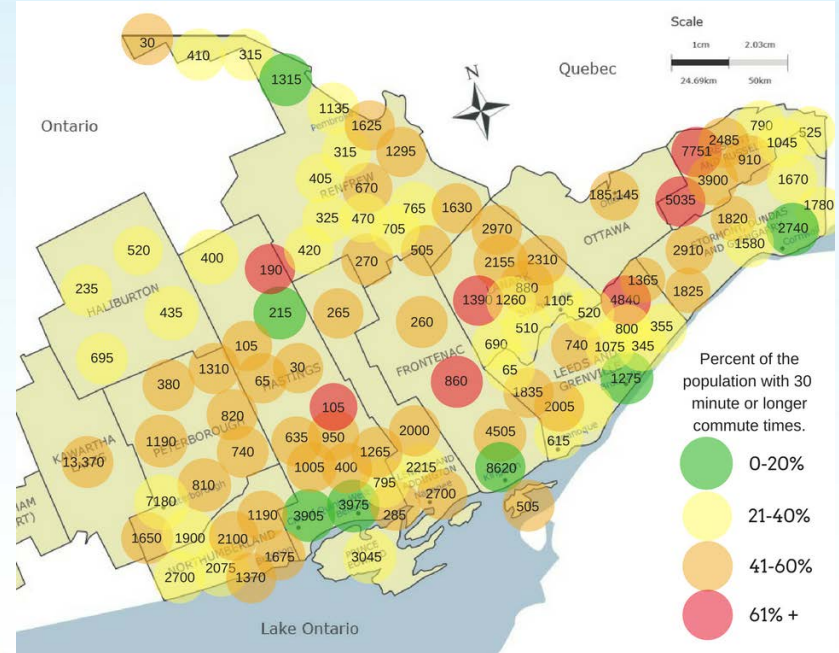
# *I2TS Working Group' Near-term Implementation Plan*

- Timeframe: 12-18 months
- Plan taken to/approved by EOLC in May 2019
- Work to date:
  - Long Combination Vehicle Information Sheet
  - Initial Data Gathering/Analysis (freight emphasis)
  - Relationship Development



# What the I2TS Working Group Is Working on 'Right Now': Commuter Strategy

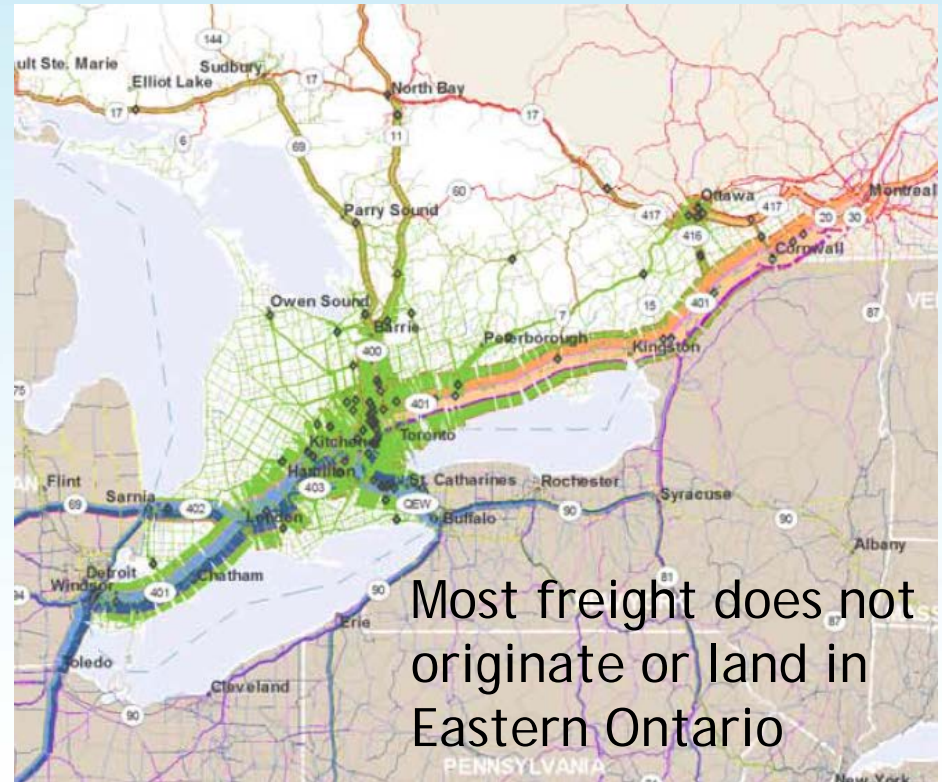
- 93% of the labour force uses a vehicle to get to work; limited/no public transit across most of region; very little crossing municipal boundaries
- Analysis of 2016 census data shows significant numbers of commuters have long commutes... 36,000 have commutes of at least an hour
- To improve accessibility to work, the EOLC is seeking provincial support for find solutions
  - Address employer difficulties in finding workers
  - Increasing accessibility of work for labour force
  - Design and test sustainable solutions





# What the I2TS Working Group Is Working on 'Right Now': Freight Movement

- Continuing work on Freight Data Gathering and Analysis
  - Preliminary data gathering was undertaken over the past year; more is required to understand freight movement 'off provincial highways' (limited in-region data)
- Opportunity to engage municipal public works, GIS and IT staffs in gathering some of the data in digital form, to present on a region-wide basis

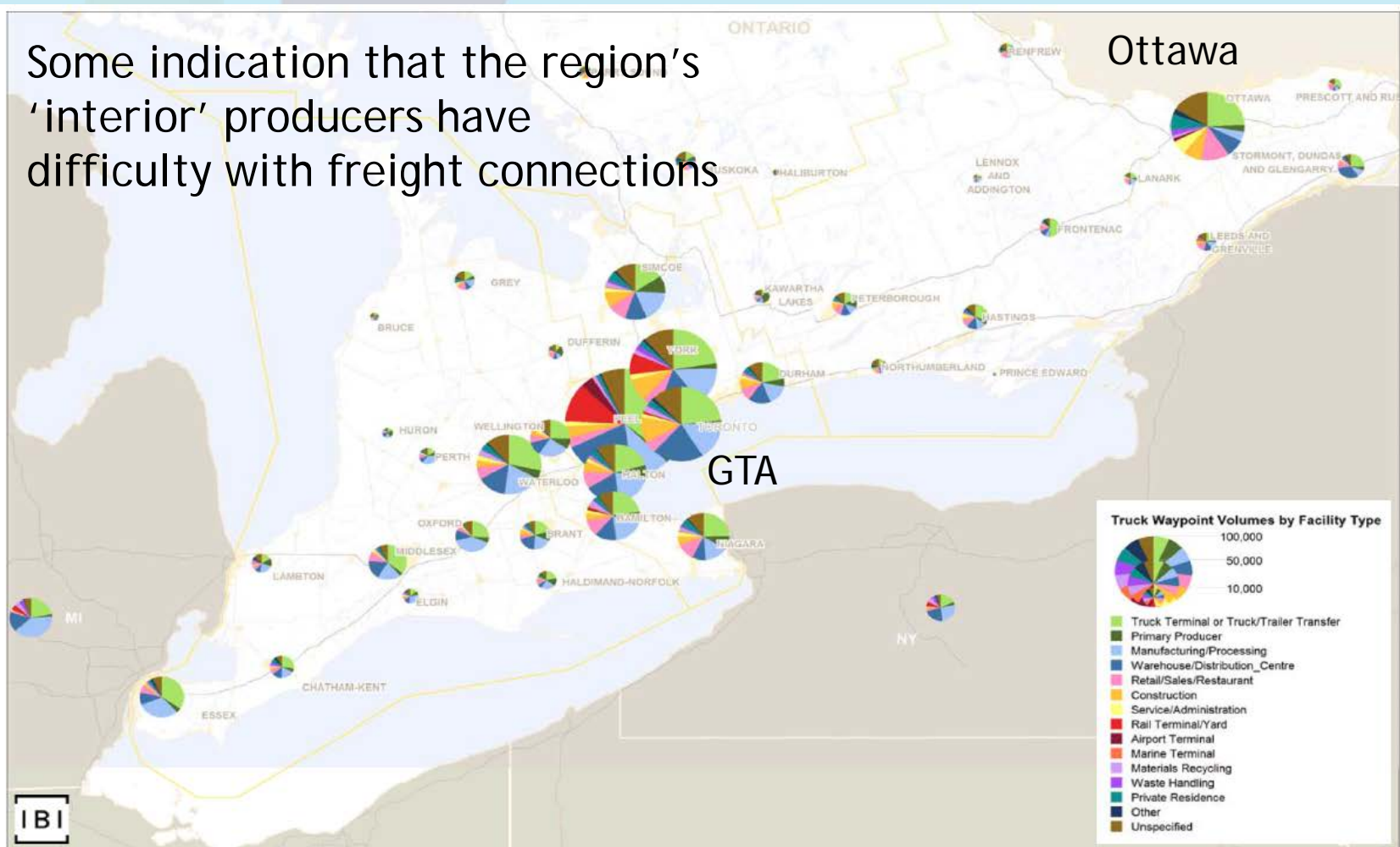


Most freight does not originate or land in Eastern Ontario

# What the I2TS Working Group Is Working on 'Right Now': Freight Movement

## Trucking Facilities & Activities Across Ontario (2012)

Some indication that the region's 'interior' producers have difficulty with freight connections





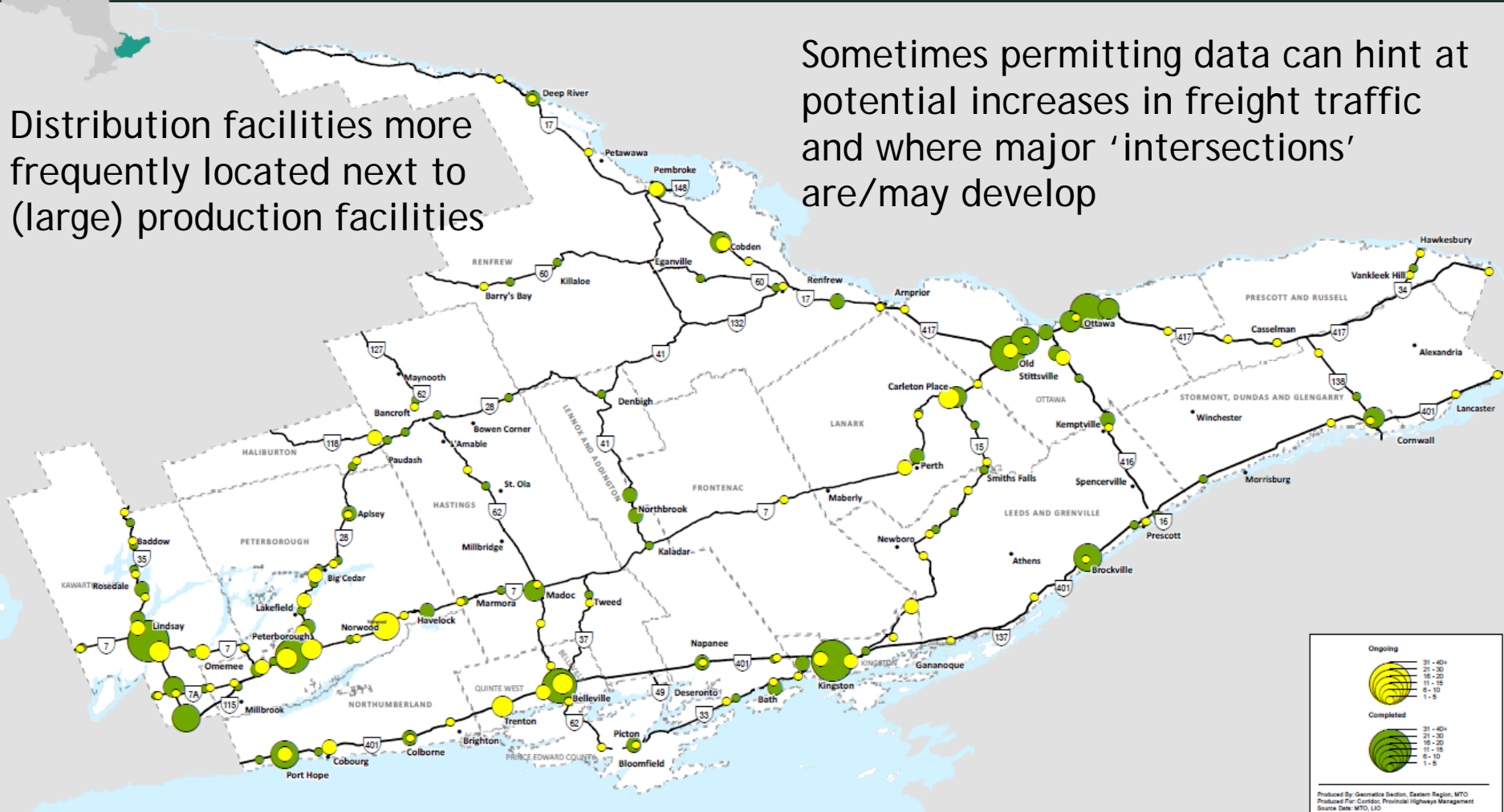
# What the I2TS Working Group Is Working on 'Right Now': Freight Movement

Ministry of Transportation - Eastern Region  
Commercial Building and Land Use Permits 2014-2018



Distribution facilities more frequently located next to (large) production facilities

Sometimes permitting data can hint at potential increases in freight traffic and where major 'intersections' are/may develop



Ongoing

Completed

31 - 40+  
21 - 30  
11 - 15  
6 - 10  
1 - 5

31 - 40+  
21 - 30  
11 - 15  
6 - 10  
1 - 5

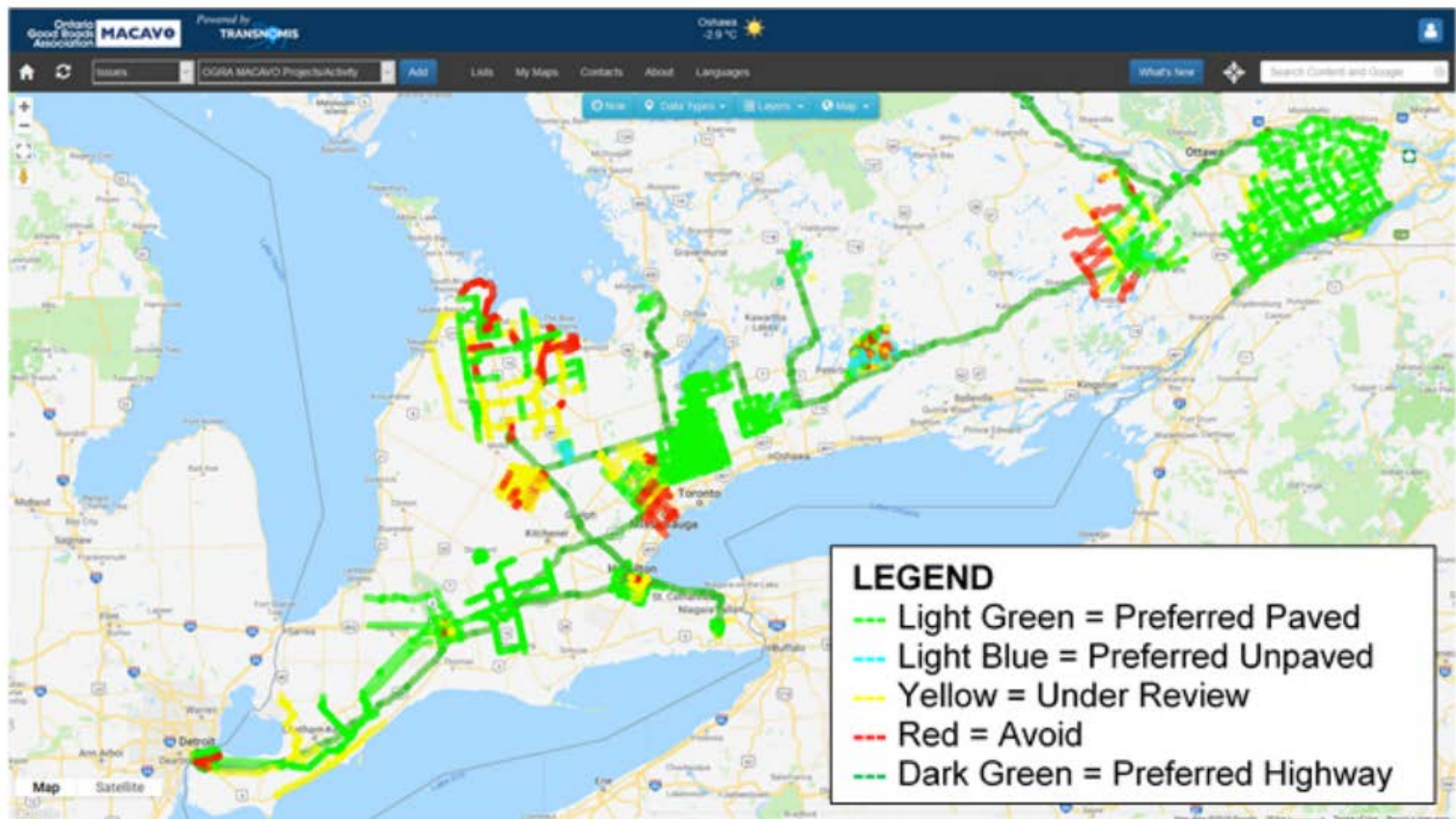
Produced By: Geomatics Section, Eastern Region, MTO  
Produced For: Corridor, Provincial Highways Management  
Source Data: MTO, LTD

# 'Right Now': Monitoring CAV Opportunities, including MACAVO

Municipalities are now designating roads to be considered for CAV; as well as truck routes; EOLC at major CAV event in Ottawa

OGRA Heads Up Alert

First draft of the Windsor-Ottawa Corridor is shown below:



# 'Right Now': Monitoring VIA Rail's Plans for a new High-Frequency Passenger Line

A New 'Northern Route' would also allow VIA Rail to optimize the current Lakeshore Route, running on CN tracks. EOLC in regular contact with VIA on their plans. VIA Rail interested in multi-modal connections.

*Note: the route shown is unconfirmed pending further analyses by VIA Rail! Consider it "approximate".*



# *Time for Your Feedback*

- Which of these regional projects do you think will be of most benefit to the Eastern Ontario economy? To your own community's economy?
- Do you see other work that needs to be undertaken at the same time as these projects, for them to be successful? What's missing?
- Are there other projects going on that should be 'connected' to this work?
- Which of these regional projects do you think should be emphasized in the next 12 months and why?
- What's the "most important thing to keep in mind" when undertaking regional projects?





# Next Steps

Drawn from May 30 implementation plan approved by EOLC

- Regional 511 - convene stakeholders
- One-Window Permitting - for oversize/overload shipments; goal: one 'app' for booking/obtaining permits for a multi-municipality shipment; focus now is 'architecture' and identifying vendors
- Data Gathering - combination of gathering traffic data and interviewing to supplement understanding; focused on freight
- Passenger/Commuting - data gathering, predominantly on demand
- Continue to monitor both CAV and VIA Rail

*Advocacy for major capital investment in infrastructure is done through the EOWC and EOMC, rather than the Working Group.*





# Ways to Get/Stay Involved

## EOLC as a Whole:

- Check website regularly: [www.eolc.info](http://www.eolc.info)
- Participate in your regional organization(s); could be Ontario East, EOFCDC, EOWC or EOMC

## I2TS:

- Sign up for push notifications
- Volunteer for a project
- Put yourself forward for Working Group membership
- Volunteer to help with a specific task
- Suggest others who have skill sets we need for success in these projects

